

Biopuremax Demonstration Unit

This unit is a system to demonstrate RO pretreatment with ESR™ – HOD™ technology. The unit produces 100-250 L/hr (adjustable) with no need for softeners or chemicals.

Biopuremax Pretreatment Technology

Electrolytic Scale Reduction (ESR™)

An electrical current generates a high pH near the cathode which deposits scale in the reaction chamber and releases CO₂.

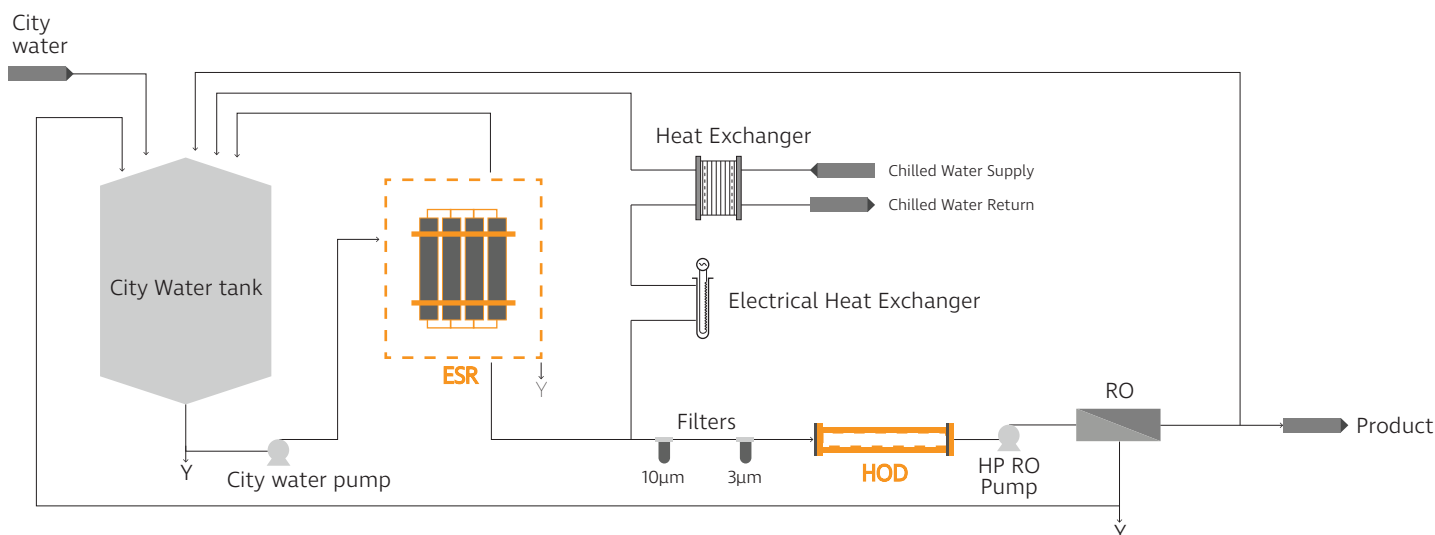
Hydro Optical De-Chlorination (HOD™)

Treats the ESR™ water, by exposure to ultra violet radiation which decomposes the free chlorine generated by the ESR™ and disinfects the water.

Feed water specifications

Total Hardness (as CaCO₃) 100-250 ppm
Chlorides 10-100 ppm
Iron < 0.2 ppm
SDI < 3 ppm
Free Chlorine < 1.0 ppm
Chloramine < 0.25 ppm
Silica < 10 ppm
Manganese < 0.02 ppm
CO₂ < 20 ppm
Conductivity 200-700 µS/cm
pH 6.5 - 8.0

Chemical and Media Free PW/WFI Production System PFD



BIOPUREMAX

Bringing Technology to Pharmaceutical Water

biopuremax.com | info@biopuremax.com

International System & Service

+972-9-971-6180

Netherlands +31-6-10-95-73-80

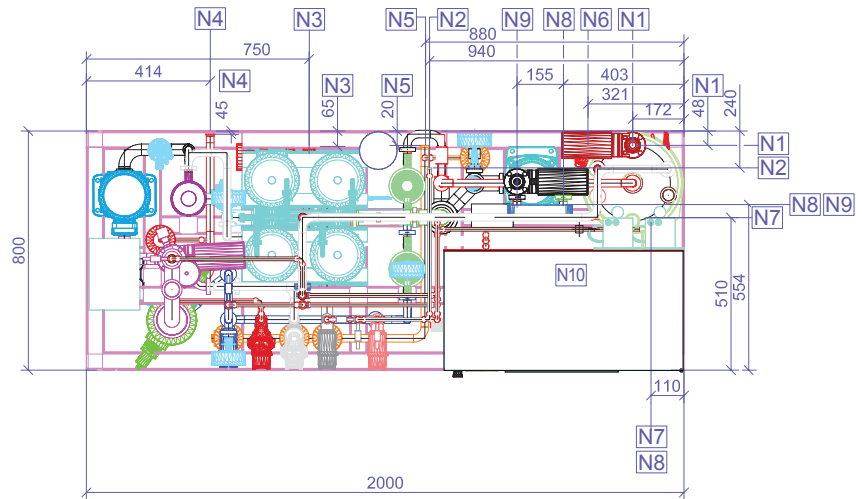
USA +1-516-684-8200

Brazil +55-11-98169-1523

Views of Demonstration Skid



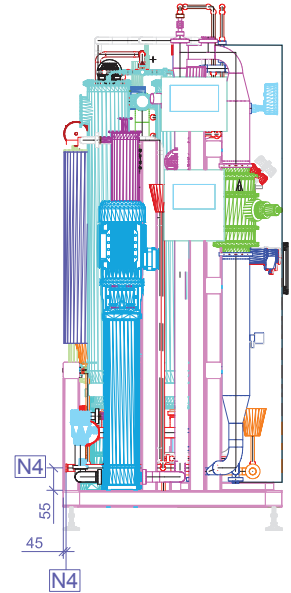
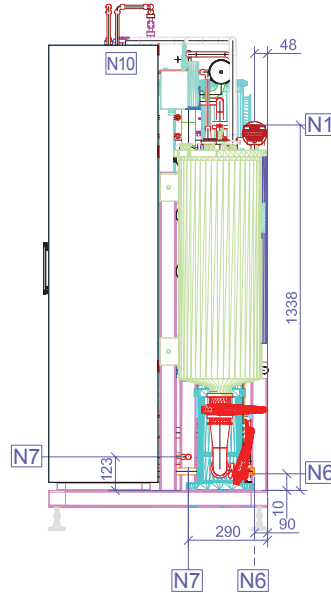
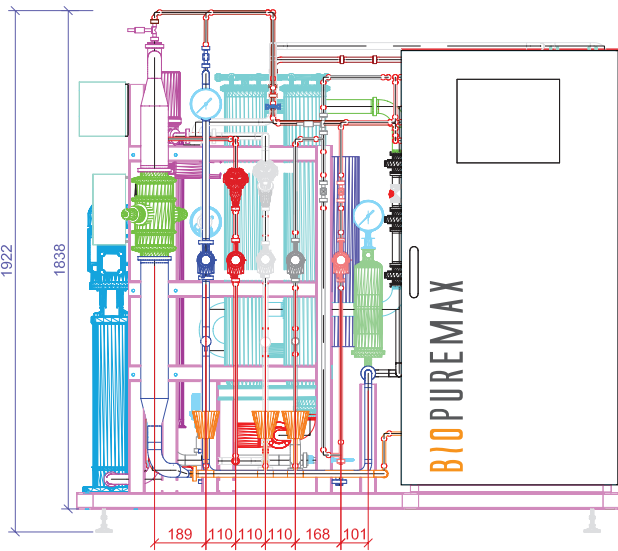
Top



Front

Right

Left



Skid Connections

Position	Service	Nominal Size	Nozzles Type	Operating Pressure (barg)	Flowrate (m ³ /hr)	Temp. (°C)
N1	CW Supply	1"	TC-(3A) Imperial	2-4	0.4	Ambient
N2	Product Outlet	1/2"	TC-(3A) Imperial	1-3	0.1 - 0.25	Ambient
N3	Drain 110-XV-011 (ESR)	1 1/2"	TC-(3A) Imperial	Hydrostatic	0.4	Ambient
N4	Drain from RO	1"	TC-(3A) Imperial	8-12	0.1	Ambient
N5	Drain from SP	1"	TC-(3A) Imperial	Hydrostatic	0.1	Ambient
N6	Drain 110-HV-002 (Tank)	1"	TC-(3A) Imperial	Hydrostatic	0.4	Ambient
N7	Instrument Air Inlet	8 mm	Quick Connect	6-8		Ambient
N8	Chilled Water Supply	1"	TC-(3A) Imperial	2-4	2	6-7
N9	Chilled Water Return	1"	TC-(3A) Imperial	2-4	2	11-12
N10	Electrical Supply	63A/400 VAC/3PH				

Dimensions (mm)

Net	L: 2000	W: 800	H: 1922
Transport	L: 2160	W: 960	H: 2050

Weight (Kg)

Net Empty	Operational	Transport
650	750	830